



Comfort Living with Beautiful House Plan from SCG

geographic model



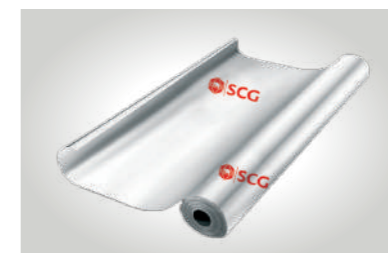
SCG Concrete Roof ,CPAC Series Standard Color - Brown Oak

Ultimate roof that lasts long and stand out for its wide -curve. It comes with new double coating technology that helps enhance the strength and durability as well as ensure a lasting beautiful color of the roof. Moreover, the specially designed 3-layered and 2-throats of water leakage protection system ensures its effectiveness.



SCG Leakage Protection System

With SCG Flashing Sheet for concrete roof, it will prevent leakage between joints of the roof. Its flexibility and self-adhesive features can be easily applied to any roof shape. It is also known for its durability.



SCG Thermal Insulation Roof System

With SCG Reflective Insulation Sheet, this helps retain excessive house-heating problem with the ability of 95% heat reflection. Its strength is also enhance with 3-way fiberglass that adds more durability so it can be handled and installed easily and hard to be deteriorated.



SCG Floor Plank Saver Series

Feel close to the nature with beautiful natural wood design which appears like real wood. Thanks to Fiber Active Plus technology which made it superior with durable quality.



SCG Wood Plank and Eaves Liner - Ruby Red

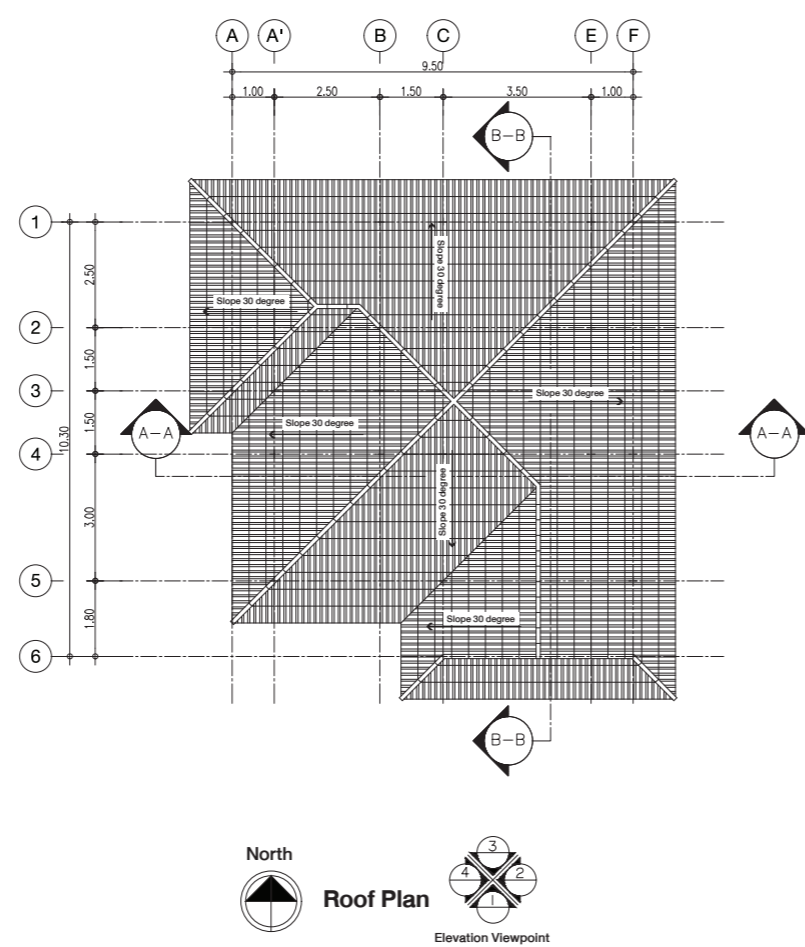
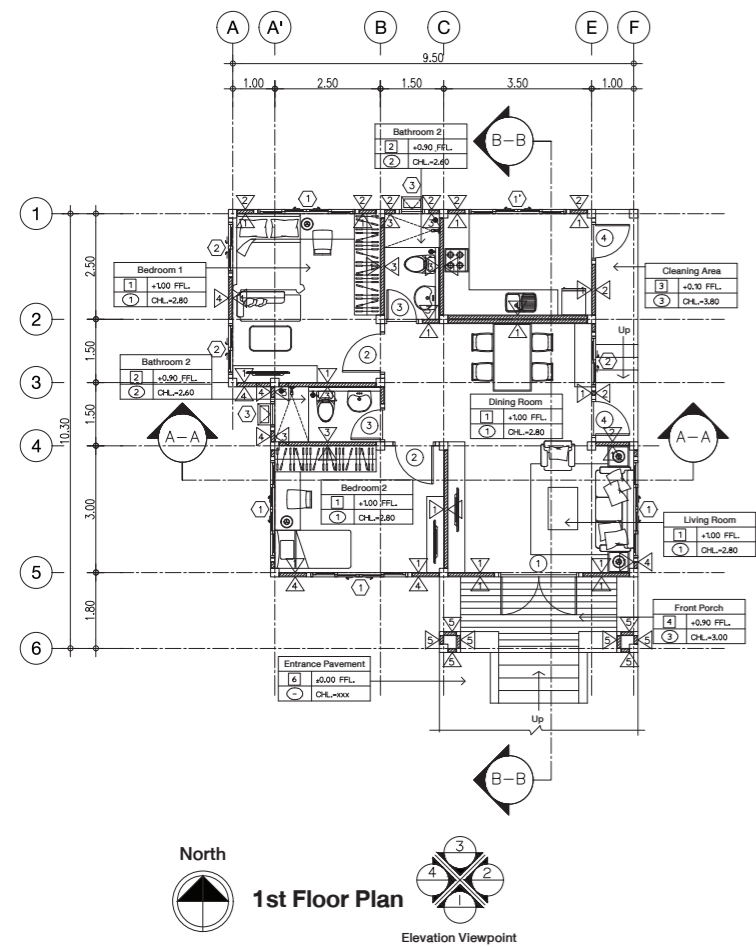
Adding the natural sense with vivid wood pattern and beautiful color shading texture on the entire strip with Color Loc technology which enhance the duration of the color throughout any season.



SCG Cement

Ordinary Portland Cement Type 1 provides high compressive strength. It is suitable for works such as foundation, columns, beams, slabs of building and estates as well as large construction. Its quality is guarantee with Thai Industrial Standards Institution, TIS 15 part 1-2555.

Layout Plan



Section - Elevation



Specification

Floor Specification

1	RC Slab finished with 60 x 60 cm. tile
2	RC Slab finished with 60 x 60 cm. skid resistant tile
3	Screed finish floor
4	SCG Floor Plank, Saver Series, 15 x 300 x 2.5 cm. painted with SCG Acrylic Paint for Fiber Cement Floor - Natural Beach
5	RC Slab finished with tile

Wall Specification

△	Brick wall, smooth cement cover with paint for internal use
△	Brick wall, smooth cement cover with paint for external use
△	Brick wall, cement cover, finished with 6" x 8" ceramic tile
△	SCG Decorative Wall, Classic Series - Ivory of 15 x 300 x 0.8 cm. with overlap installation
△	Brick wall, cement cover, finished with SCG Concrete Wall Tile, True Touch Stone Series - Sahara
△	SCG Decorative Wall - Ruby Red of 15 x 300 x 0.8 cm.

Ceiling Specification

1	Ceiling using SCG Smartboard Squared Edge of 120 x 240 x 0.4 cm., installed with galvanized iron metal ceiling frame (internal)
2	Ceiling using SCG Smartboard Squared Edge of 120 x 240 x 0.4 cm., installed with galvanized iron metal ceiling frame (bathroom)
3	SCG Smart Soffit Panel, size 60 x 100 x 0.8 cm.

Roof Specification

Roof Tile	SCG Concrete Roof Tile, CPAC Series - Standard Color, paint with Brown Red Oak
Roof Truss	SCG Roof Truss
Roof Purlin	SCG Purlin
Reflective Insulation	SCG Reflective Insulation
Eaves	SCG Eaves Liner, Size 15 x 400 x 1.6 cm., 20 x 400 x 1.6 cm. with overlap installation, painted with acrylic paint
Eaves Ceiling	SCG Smart Soffit Panel, size 60 x 100 x 0.8 cm., paint with 100% white acrylic paint

Fence Specification

Fence Plank	SCG Fence Plank, Size 10 x 400 x 1.2 cm. painted with brown acrylic paint (spliced with 2 blocks)
-------------	---

SCG PRODUCT LISTS

Roof System

1	SCG Concrete Roof Tile, Brown Red Oak Tone	1,713	Tiles
2	SCG Round Ridge Cover - Brown Red Oak Tone	132	Tiles
3	SCG Verge Cover - Brown Red Oak Tone	16	Tiles
4	SCG Round Ridge End - Brown Red Oak Tone	6	Tiles
5	SCG Barge - Brown Red Oak Tone	1	Tile
6	SCG 3 Ways Round Apex - Brown Red Oak Tone	1	Tile
7	SCG 4 Ways Round Apex - Brown Red Oak Tone	1	Tile
8	SCG Flashing Sheet	6	Sheets
9	SCG Full Dry Tech System	14	Boxes
10	SCG Roof Tile Self Drilling Screw 2-inch	1	Box
11	SCG Roof Tile Screw 2.25-inch	7	Boxes
12	SCG Purlin 0.55 mm. 4 m.	132	Blocks
13	SCG Purlin Screw	3	Boxes
14	SCG Valley Trough Gutter 12 cm.	6	Blocks
15	SCG Eaves Filler Unit	8	Boxes
16	SCG Reflective Insulation Sheet 60 m.	2	Rolls
17	SCG Reflective Insulation Sheet 20 m.	2	Rolls
18	SCG Valley Rafter Flashing Sheet	3	Sheets
19	SCG Mortar Bed Paint - Brown Red Oak	1	Can

20	SCG Stainless Tile Clip	4	Boxes
21	SCG Galvanized Smartwood Eave Clips	4	Boxes
22	SCG Purlin Clip	5	Boxes
23	SCG Eaves Liner - Primer of 15 x 400 x 1.6 cm.	15	Boards
24	SCG Eaves Liner - Primer of 20 x 400 x 1.6 cm.	15	Boards

Internal Ceiling, Bathroom Ceiling, and Eaves Ceiling System

1	SCG Smartboard Squared Edge 120 x 240 x 0.4 cm.	24	Boards
2	SCG Smart Soffit Panel, size 60 x 100 x 0.8 cm.	90	Boards
3	SCG Smart Soffit Ceiling Accessories	14	Sets
4	Ceiling Wall Angle	33	Blocks
5	SCG Plastic Anchor 37 mm. length	1	Box
6	SCG Needle Point Screw 38 mm. length	1	Box
7	Fixing and Hanging Accessories	86	Sets
8	Upper Frame (C-Line)	22	Blocks
9	Lower Frame (C-Line)	43	Blocks
10	Lock Clip	195	Clips
11	SCG Needle Point Screw 23 mm. length	3	Boxes

Floor System

1	SCG Floor Plank, Saver Series - Uncolored, size 15 x 300 x 2.5 cm.	18	Boards
---	--	----	--------

2	Steel flooring joist (6 meters length/block)	5	Blocks
3	SCG Self Drilling Wing Screw 45 mm. (250 screws/box)	2	Boxes
4	SCG Acrylic Paint Sealant 310 ml.	1	Unit
5	SCG Acrylic Paint for Fiber Cement Floor 3.6 kg. (double painting)	1	Can
6	SCG Acrylic Paint for Fiber Cement Wood - Primer 3.5 kg.	1	Can

Gable

1	SCG Wood Plank - Ruby Red of 15 x 300 x 0.8 cm.	40	Boards
2	Steel Wall Frame	5	Blocks
3	SCG Self Drilling Screw 28.5 mm. length	2	Boxes
4	SCG Acrylic Paint Sealant 310 ml.	1	Unit
5	SCG Acrylic Paint for Fiber Cement Wood 3 kg. (double painting)	1	Can

REMARK:

- * These items are only a calculated estimation. Actual amount should be calculated again on-site when placing the order.
- * These items listed have not yet been calculated for spare parts, which should be calculated again on-site.
- * The fixing and hanging accessories include spring lock + bracket lock + steel anchor + mounting bracket + Hanger Wire